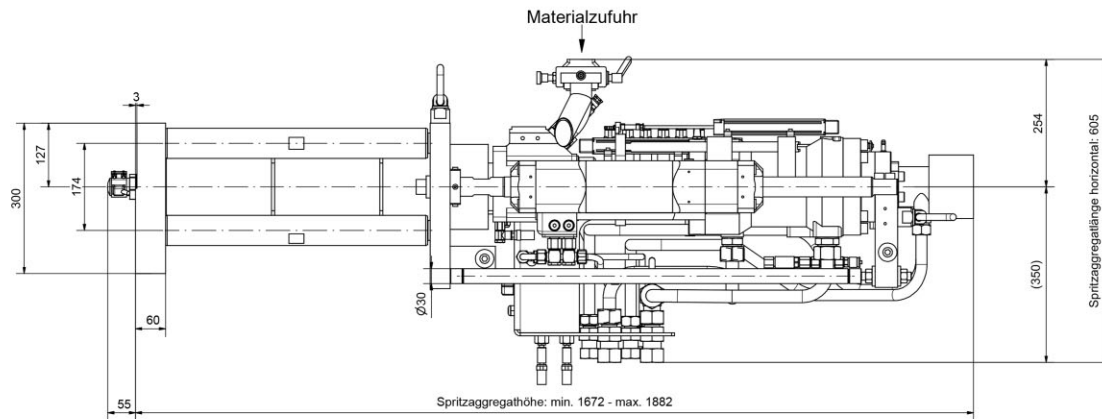


# BOY 2C M (SP 205)

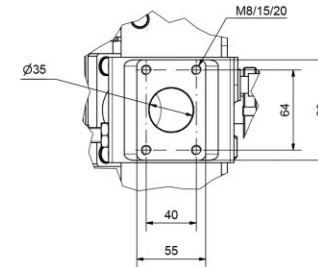
Einbaumaße / Platen Dimensions / Montage de moules / Montaje del molde



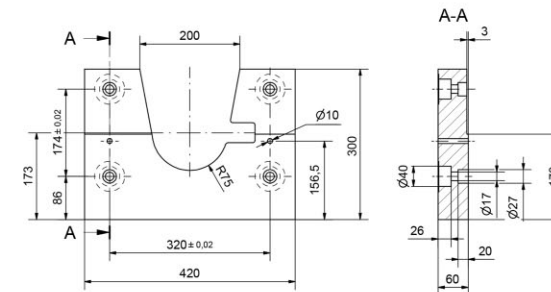
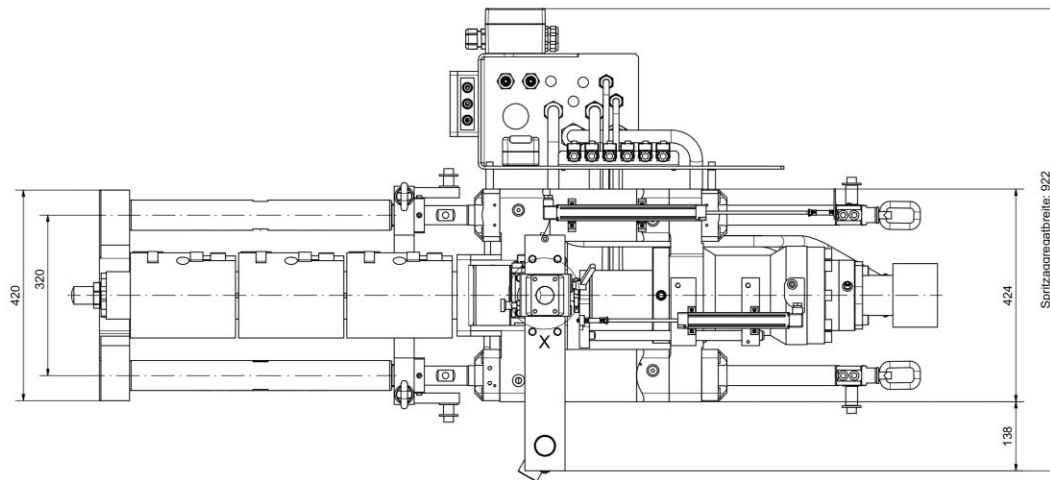
Spritzgiessautomaten



X (1:2)  
Anschlussmaße für Aufbaugeräte



Seite/Page 1/2



Dr. Boy GmbH & Co. KG  
Industriegebiet Neustadt/Wied  
Neschener Str. 6  
53577 Neustadt/Wied  
Germany

Telefon +49 / 2683 / 307-0  
Telefax +49 / 2683 / 32771  
Internet [www.dr-boy.de](http://www.dr-boy.de)

# BOY 2C M (SP 205)

Einbaumaße / Platen Dimensions / Montage de moules / Montaje del molde



Spritzgiessautomaten

Seite/Page 2/2

